



## 8060 Series Nitrogen-specific HPLC analysis

Antek's Model 8060 CLND uses Antek's accurate and precise Pyro-chemiluminescent™ technology to deliver an equimolar response for all nitrogen-containing compounds. The Chemiluminescence method is clean, fast and interference free. This ground-breaking method can determine all bound nitrogen in a variety of matrices.

Methods for characterizing crude products of a synthesis, quantitating target compounds or generating potency measurements may be based

on traditional detectors, such as UV. These methods are often inaccurate and time consuming. Additionally, this type of detector response depends on chromophores and requires a purified reference for each compound you investigate.

The Antek 8060 Series provides the solution. Our range of nitrogen-specific HPLC analyzers enables analysts to calculate compound potency using only a single, high purity nitrogen calibration standard.

### Available Antek 8060 configurations:

- **8060**  
The 8060 is the original chemiluminescent detector for HPLC applications. This version is capable of normal and reverse phase applications, ideal for basic research and method development. Control parameters are set using clear front panel controls.
- **8060-R**  
The 8060-R can perform reversed phase applications. It offers all the benefits of electronic gas flow controls, with a lower initial investment.

Total Nitrogen, Stand Alone, Multiple Detector and additional configurations are available on request.

### BENEFITS

- Quantitate complex samples using a single standard
- No chromophore means that derivatization is not required
- Equimolar detection means that results do not depend on compounds
- Easy to operate

### APPLICATION RANGE

- Nitrogen



**solidpartners**  
proven solutions

#### U.S.A.

PAC, LP | 8824 Fallbrook Drive | Houston, Texas 77064  
T: +1 800 444 TEST | O: +1 281 940 1803 | F: +1 281 580 0719  
sales.usa@pacpl.com | service.usa@pacpl.com

#### FRANCE

BP 70285 | Verson | 14653 CARPIQUET Cedex  
T: +33 231 264 300 | F: +33 321 266 293  
sales.france@pacpl.com | PACServiceFrance@pacpl.com

#### GERMANY

Badstrasse 3-5 | P.O.Box 1241 | D-97912 Lauda-Königshofen,  
T: +49 9343 6400 | F: +49 9343 640 101  
sales.germany@pacpl.com | service.germany@pacpl.com

#### SINGAPORE

61 Science Park Road | #03-09/10 The Galen  
Singapore Science Park III | Singapore 117525  
T: +65 6412 0890 | F: +65 6412 0899  
sales.singapore@pacpl.com | service.singapore@pacpl.com

#### NETHERLANDS

P.O.Box 10 054 | 3004 AB Rotterdam  
Innsbruckweg 35 | 3047 AG Rotterdam  
T: +31 10 462 4811 | F: +31 10 462 6330  
sales.netherlands@pacpl.com | service.netherlands@pacpl.com

#### RUSSIA

Shabolovka Street | 34, Bldg. 2 | 115419 Moscow  
T: +7 495 617 10 86 | F: +7 495 913 97 65  
sales.russia@pacpl.com | service.russia@pacpl.com

#### CHINA

Room 1003, Sunjoy Mansion | No. 6 RiTan Rd.  
Chao Yang District | Beijing 100020  
T: +86 10 650 72236 | F: +86 10 650 72454  
sales.china@pacpl.com | service.china@pacpl.com

#### INDIA

1036 Regus | Trade Center, Level 1  
Bandra (E) - 400 051 | Mumbai  
T: +91 22 40 700 447 / 700 | F: +91 22 40 700 800  
sales.india@pacpl.com | service.india@pacpl.com

#### MIDDLE EAST

A1 Quds Street, A1 Tawar road | LIU#H13 Dubai Airport Freezone  
Near Dubai Airport (terminal 2) | P.O.Box #54781 | Dubai, UAE  
T: +971 04 2947 995 | F: +971 04 2395 465  
sales.middleeast@pacpl.com | service.middleeast@pacpl.com

#### SOUTH KOREA

#621 World Vision Building | 24-2, Youido-dong  
Seoul 150-010  
T: +82 2785 3900 | F: +82 2785 3977  
sales.southkorea@pacpl.com | service.southkorea@pacpl.com

#### THAILAND

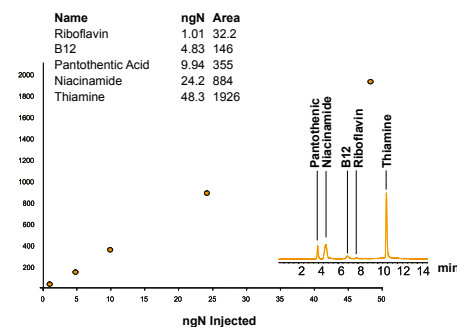
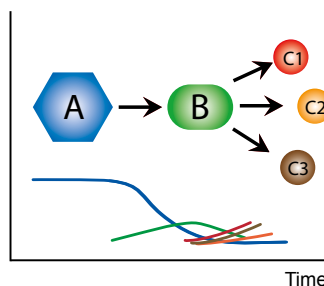
26th Floor, M. Thai Tower | All Seasons Place  
87 Wireless Road | Lumpini, Phatumwan | Bangkok 10330  
T: +66 2627 9410 | F: +66 2627 9401  
sales.thailand@pacpl.com | service.thailand@pacpl.com

PAC Authorized Representatives are located in almost every country.  
For more information visit [www.pacpl.com](http://www.pacpl.com)

## Automated sulfur analysis

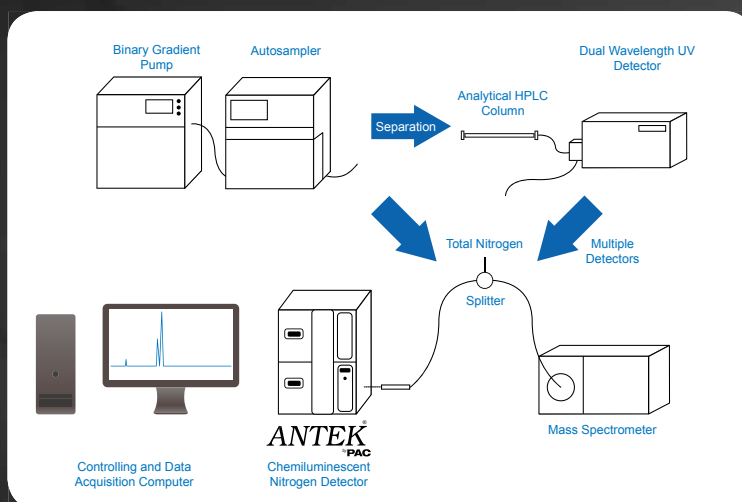
Antek's Model 8060 CLND is the only truly equimolar HPLC detector. A precise equimolar response for all nitrogen-containing samples enables multiple and complex samples to be quantitated using a single standard.

Nitrogen  
Concentration



## Nitrogen mass balance and product degradation

## Unique equimolar response



## Antek 8060 configurations

## ANTEK 8060 SPECIFICATIONS

Operation	
Detection	Pyro-chemiluminescence™
HPLC System Requirements	Operates on any system with an accurate pulse-free pump. Typical mobile phases (non-nitrogenous containing) include water, alcohol, TFA and other modifiers.
Flow rate	10–300 µL/min
Sensitivity	<0.1 nanogram of nitrogen
Outputs	1 mV, 1 V, 10 V
Gases	Dry oxygen: 50–200 cc/min 99.75% 4.5 bar (60 psig). Dry carrier (argon or helium): 50–200 cc/min 99.99%, 4.5 bar (60 psig)
Dimensions	15cm x 26cm x 21cm (W x D x H) (6 x 10.23 x 8.27 inches)
Weight	36 kg (80 lbs)
Utility Requirements	
Electrical	115 vac 50/60 Hz 12 Amp or 230 vac 50/60 Hz 6 Amp

Due to continuing product development, specifications are subject to change at any time without notice. All products are CE compliant.



[www.pacpl.com](http://www.pacpl.com)

Copyright 2012 PAC L.P. All rights reserved - 820-697 2012/1



USA • FRANCE • GERMANY • NETHERLANDS • UAE • RUSSIA • CHINA • SINGAPORE • SOUTH KOREA • THAILAND • INDIA